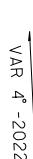
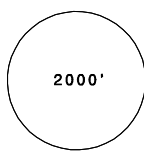
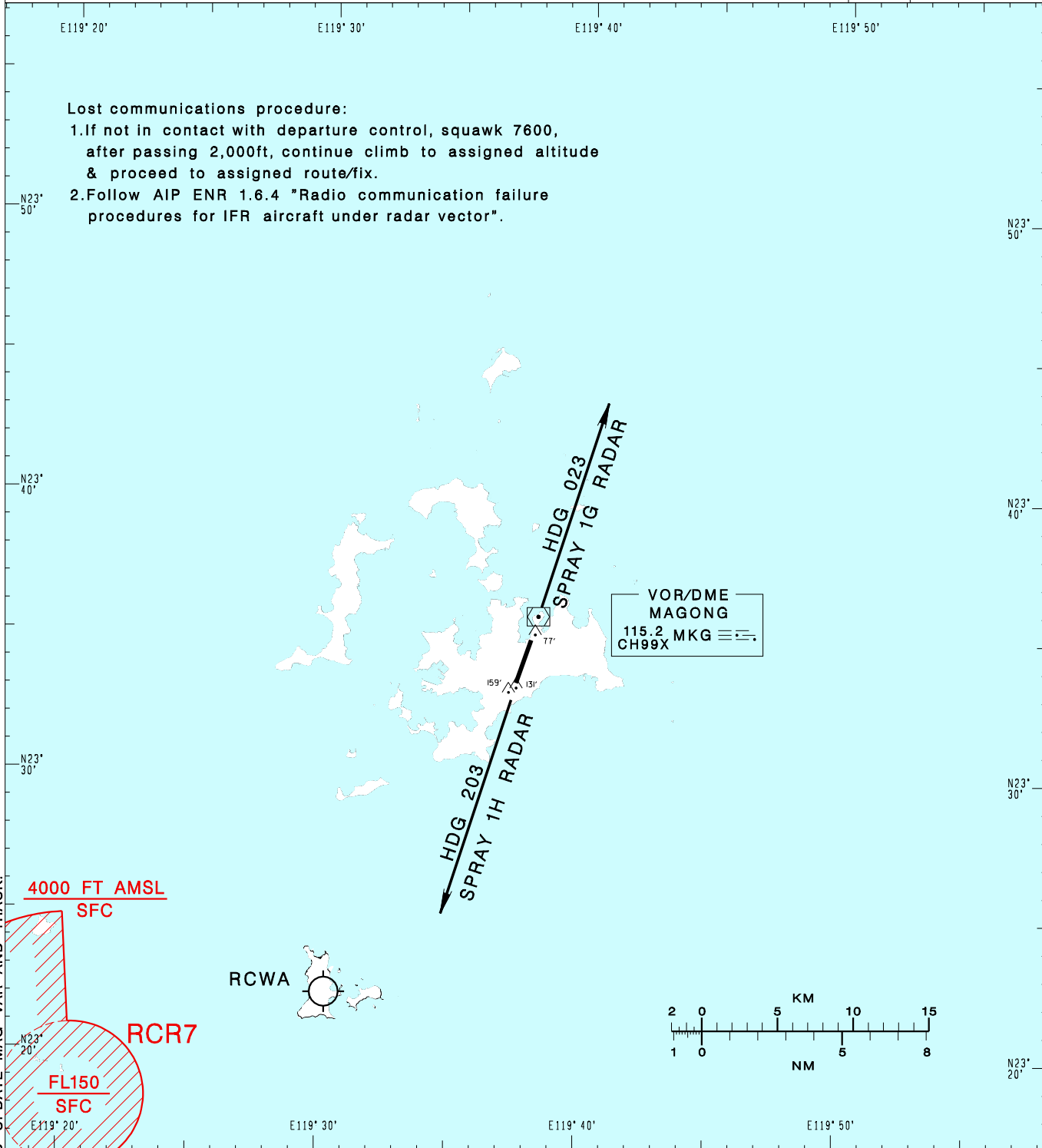


澎湖機場
PENGHU AD

RCQC SID
SPRAY 1G RADAR(RWY02)
SPRAY 1H RADAR(RWY20)

KAOHSIUNG APP 128.1 234.8	MAGONG TWR 118.3 236.6	ATIS 127.05	  MSA ARP 25NM	
Apt Elev: 103'		Trans Level: FL130		Trans Alt: 11,000'
BEARINGS ARE MAGNETIC; DISTANCES ARE NAUTICAL MILES; ELEVATIONS, HEIGHTS IN FEET				



Lost communications procedure:
 1.If not in contact with departure control, squawk 7600, after passing 2,000ft, continue climb to assigned altitude & proceed to assigned route/fix.
 2.Follow AIP ENR 1.6.4 "Radio communication failure procedures for IFR aircraft under radar vector".

VOR/DME
MAGONG
115.2 MKG CH99X

CHANGES:RENAME AND UPDATE MAG VAR AND TRACK.

SPRAY ONE GOLF RADAR DEPARTURE
Climb on HDG 023 to ATC assigned altitude for vector to assigned route/fix.

SPRAY ONE HOTEL RADAR DEPARTURE
Climb on HDG 203 to ATC assigned altitude for vector to assigned route/fix.

NOTE
Caution close-in obstacles (trees, poles & water tower):
159ft MSL, 794m & 131ft MSL, 292m south of THR02;
77ft MSL, 436m north of THR20.